

FORENOON FARM EQUIPMENT & CHOICE BARE LAND

AUCTION

TIN CUP LUNCH ON GROUNDS

SATURDAY, AUGUST 14, 2010 @ 9:45 A.M.

As Richard & Jacque are retiring and due to the death of Mervin Wegner all the following will be sold at the Wegner farm located 1 mile south of Lewisville, MN on Highway 15, and 1/4 mile west; or 15 1/2 miles north of I-90 Fairmont Exit #102 on Highway 15 and 1/4 mile west, or 32 miles SW of Mankato, MN.



EXCELLENT LINE OF RETIREMENT FARM EQUIPMENT INCLUDING:

TRACTORS: **JD 4650 Diesel Tractor**, FWA, Cab, air, 15 SP Power shift, Firestone radial 18.4.42 tires & matching fact. Duals, 6201 hrs, SN:14866, triple outlets, 3PT, yoke, 12 front suitcase wts., paperwork on updates furnished, complete engine approx. 700 hrs ago at Tri-County Implement. **JD 4430 Diesel**



Tractor, cab, air, Firestone radial 18.4.38 tires & duals, power-shift, SN: 69783, 9770 hrs., 3PT, yoke, dbl outlets, rock box FWF, 540 & 1000 P.T.O., very clean. **TRACTOR EQUIPMENT**(6) **John Deere** suitcase wts. to be sold separate, cylinders, front end wts. for series tractors, **JD & Oliver** rear wts. **LAWN EQUIPMENT INCLUDES: John Deere LA 125 & John Deere LT150, lawn tractor; JD yard trailer and other items.**



COMBINE & HEADS

JD 9400 Diesel Combine, large engine, cab, air, Hydro, 1566 separator hrs, adjustable rear axle, bin extension, long auger, grain loss monitor, 24.5 . 32 rubber, SN:640232, verified engine & drive updates, always shedded, very sharp, used on this farm. **JD 220 Flex head; JD 643-6-30 corn head**, only 300 acres use since complete head update, papers furnished.

JOHN DEERE FARM EQUIPMENT

JD No. 510 15' - 5 shank disc chisel, rock gangs; **JD No. 7200** 12-30 front fold pull planter, 250 monitor, trash whippers, 3 bu. Boxes, has regular Deere seed disc's, will sell 30 P.S.I. meter & new style JD seed discs separate. **JD No. 820 8-30** cult & shields; **JD No. 2800** 5 bottom vari width plow, toggle trip, coulters, gauge wheel. **JD No. 960** 32 1/2' pull type field cultivator, walking axles on center & wing sections; **JD 3 bar** mulcher, low acres; **JD** rear cultivator for parts, used as side dress Applicator

OTHER FARM EQUIPMENT

DEMCO model HP pull type tandem wheel sprayer, 50' folding self leveling boom, Raven monitor, hydraulic sprayer pump; **Balzer** 6-30 flail stock chopper, 1000 R.P.M., 4 carry wheels, like new; **Case IH** No.80 rotary snow-blower; Adams Steel wheel road grader; (2) 500 & (1) 1000 gal poly tank, 5 H.P. B & S transfer pump. **International 80** - 7' wide snowblower.

MISCELLANEOUS

Several Feeken & steel tubing livestock gates; Approx 25 welded cattle panels; timber & lumber; New white steel bldg sheets up to 30' long; Some 3" lumber, Bulk soybean 3 pt. mover; 500 & 1000 gal diesel tanks, 1 pump; 500 gal gas tank & pump; Chem inductors; Mini bulk tank; Pkup fuel tank & pump; Chipwood panels; (2) 7 1/2 HP elect motors; Shop table; 14' steel parts bin; 200 gal. saddle tanks; New Cenex diesel oil. Some hand tools & other misc. items.

TRAILERS: (2) **Parker** 400 bu gravity wagons & HD gears, 1 with 8 hole hubs & 16.5 x 16L tires, double doors; 180 bu gravity seed box, on 4 wheel HD trailer, brush augers, independent B & S power unit; 8 x 12 flatbed machinery trailer.

GRAIN EQUIPMENT & AUGERS & EQUIPMENT

Farm fans **AB 180** A single phase auto dryer, SN: 80268, 4875 hrs; 1000 bu. Wet holding tank w/transport; **Federal** 54' 7" auger, 7 1/2 HP elect.; **Westfield** WR 80-51 auger, 7 1/2 HP elect motor, Like new; **Westfield** 80-41 auger, . 10 HP elect.; **Westfield 8"** - 31' truck auger w/transport, 5HP elect.; **Sukup** vertical bin auger for parts; **Mayrath** auger & transport for parts; (2) **Westfield** auger jack transports to attach to bottom end, fiberglass hoppers; A lot of good quality 220 SP elect cords.



PICKUP AND CAR



'89 **Chev. 4x4** 1/2 ton V8, manual 5 SP, high mi, runs good; '95 **Buick Century** 4 dr. Sedan, 4 cyl, new tires, one owner, 120,558 actual miles.

ANTIQUES All steel wheeled wagon w/HD J235 hubs; Triple box; Eggs baskets; milk cans; churn; other steel wheels.

Bid online at: www.proxibid.com/kahler
or call 877.505.7770
Proxibid on equipment only

Online Bidding Powered By: proxibid

AUCTIONEERS NOTES on farm equipment: An outstanding line of well kept equipment, has had best of care on small farm, always shedded, service work by John Deere dealership; **INSPECTION** invited from Monday August 9th from 9A.M. to 5 P.M. or by appt. with Richard Wegner Cell # 507-380-9222 or home # 507-388-7343. **ORDER OF SALE:** Start on Miscellaneous items will be on large equipment by 10:30 A.M., will be on land approx 12 noon. All equipment to be removed by Sept. 1, 2010

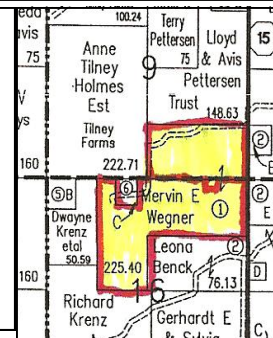
RICHARD AND JACQUE WEGNER, OWNERS

ESTATE LAND AUCTION

223 +/- ACRES CHOICE BARE FARMLAND



PARCEL #1: N 1/2, NE 1/4 SECTION 16 "EXCEPTING" APPROX 5 ACRE BUILDING SITE.
PARCEL #2: E 1/2, NW 1/4 SECTION 16 "EXCEPTING" APPROX 10 ACRE BUILDING SITE.
PARCEL #3 S 1/2, SE 1/4 SECTION 9. ALL LAYING CONTIGIOUS IN ANTRIM TOWNSHIP WATONWAN COUNTY, MN. This land will be sold using our Board System. Each parcel will be offered separately; may be purchased separately, or in any combination to the highest bidder. To anybody not familiar to this selling system, we will be glad to demonstrate method at open house or any time ahead of auction. See below for inspection date and information booklets.



Auctioneers note and land information: 3 outstanding parcels of bare land with good outlets, considerable amount of private tile, has productivity index of 89%, total of 212 acres tillable and 50% corn base. Information packet will include multi-insurance crop production with last 5 years soybean yield, average in 60 bu. per acre range. These parcels have had excellent job of farming, farm has had a long time application of cattle and turkey manure. Those wishing information on these parcels may pickup packet at one of our offices in Fairmont, Jackson, Mankato or Butterfield, or information will be available at **open house at location of farm Monday Eve. August 9 from 6 p.m. to 9 p.m. TERMS: 20% down day of auction to be deposited with the Edman & Edman Attorney's Trust Account, balance due Dec. 1, 2010 when full possession given, Buyers may enter as soon as 2010 crops removed to prepare for 2011 crops. Seller pays RE Taxes due in 2010. Buyer pays taxes due in 2011. All land sold "AS IS WHERE IS", it is the interested bidders duty to inspect property prior to bidding. All information given is Governmental info., Sale Staff or Estate Representatives make no guarantees to their accuracy. Owners or Sales Staff not responsible for accidents on or off premises or with equipment after removal. Lots more photos of farm equipment can be seen on our website at www.landservicesunlimited.com or www.auctioneeralley.com**

MERVIN E. WEGNER TRUST, ESTATE OWNER

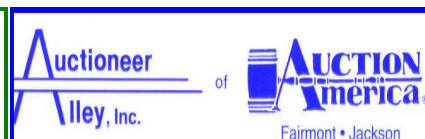
Richard Wegner & Vicki Hawkes, Pers. Reps for the Estate-John Edman of Edman & Edman, Fairmont Attorneys for Sellers

AUCTIONEERS

Allen Kahler, Broker #RA-415792
Sherburn - 507-764-3591
Kevin and Ryan Kahler, Fairmont & Sherburn
Doug Wedel, Welcome
Dan Pike, C.A.I. 32-09-015 - Jackson
Darwin Hall, Butterfield



Real Estate and Appraisals
117 No. Main St.
Fairmont, MN 56031
Ph: (507) 238-4318
Fax: (507) 238-1107



117 NORTH MAIN FAIRMONT, MN
507-238-4318
MYLA ROSKOP, OFFICE MANAGER
www.auctioneeralley.com

NK CLERKING

Nora, Janet, Leah and Chris Kahler

SALES & APPRAISALS

Bill LeDuc
Mankato Office
507-995-9311